



PER MONTH

**£2,500 Per Month**

**Wharf Road**

London, N1 7EW

Set on the 1st floor of a modern development is this 2 bedroom apartment.

The property features a bright open plan kitchen to reception room with access to private balcony, 1 double bedroom with en-suite bathroom, further single bedroom, family bathroom and ample storage.

The development features a concierge and lift facilities.

Located near Regent's Canal and within easy reach of Angel and Old Street. Renowned for its sleek design and vibrant surroundings, it provides urban living at its finest.

5 weeks deposit: £3230

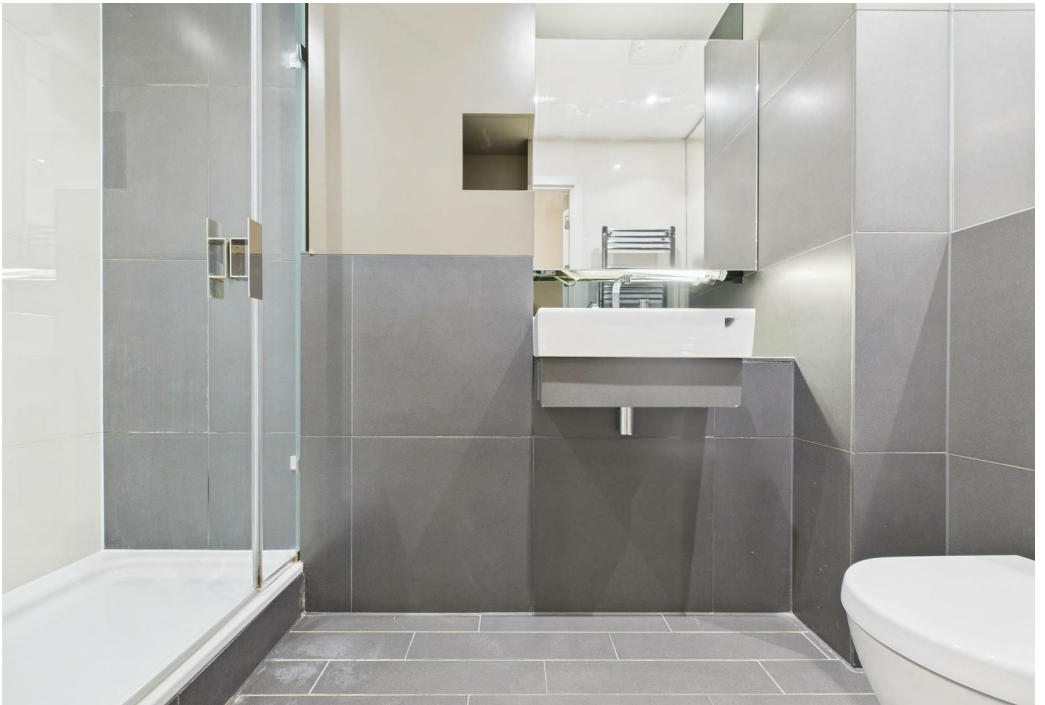
12 month tenancy: break clause subject to offer

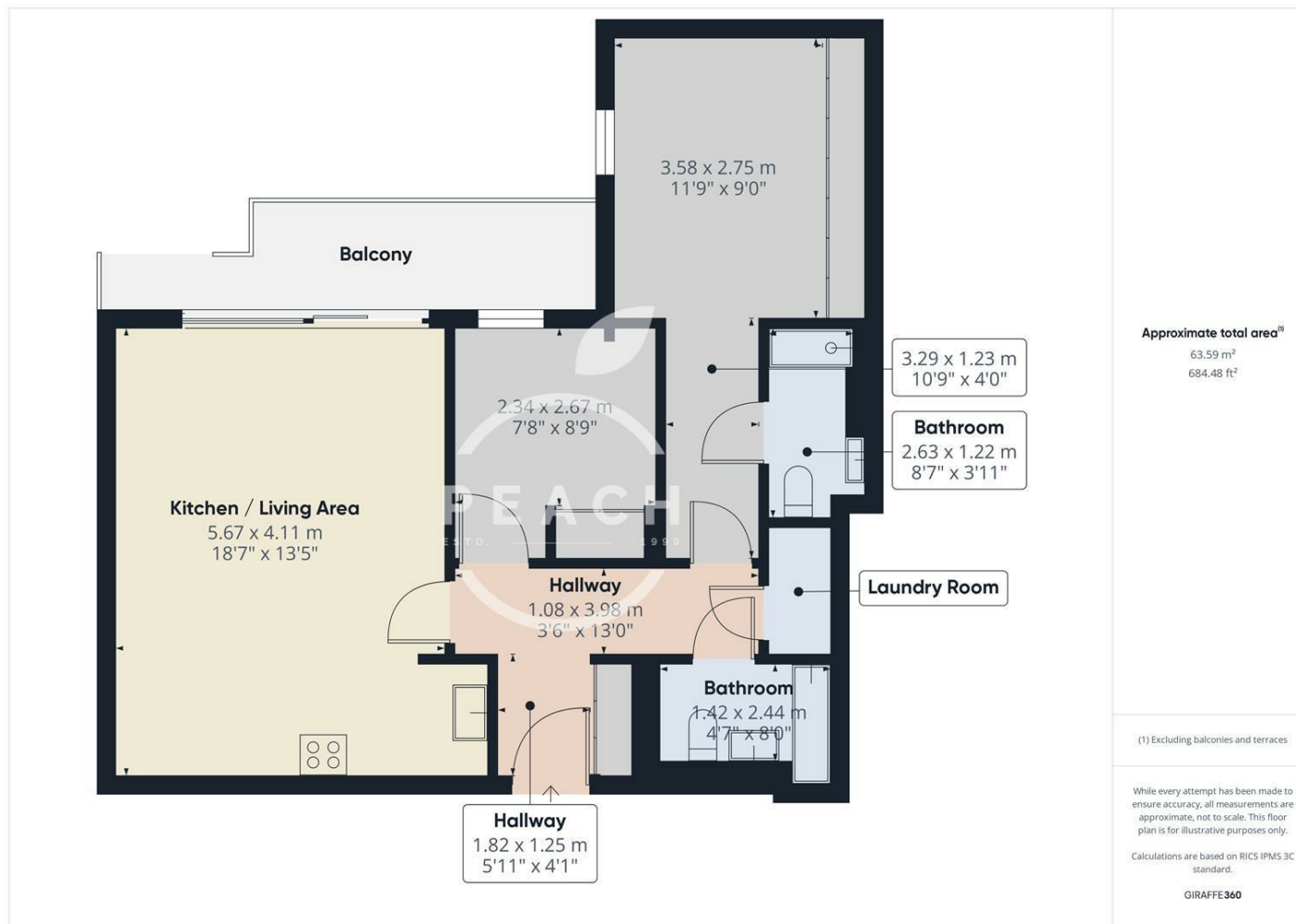
Council Tax: Band E

Unfurnished









Energy Efficiency Rating		
	Current	Potential
Very energy efficient - lower running costs		
(92 plus) <b>A</b>		
(81-91) <b>B</b>	<b>81</b>	<b>81</b>
(69-80) <b>C</b>		
(55-68) <b>D</b>		
(39-54) <b>E</b>		
(21-38) <b>F</b>		
(1-20) <b>G</b>		
Not energy efficient - higher running costs		
<b>England &amp; Wales</b>	EU Directive 2002/91/EC	

Agents Note: Whilst every care has been taken to prepare these particulars, they are for guidance purposes only. All measurements are approximate and are for general guidance purposes only and whilst every care has been taken to ensure their accuracy, they should not be relied upon and potential buyers/tenants are advised to recheck the measurements

**OFFICE ADDRESS**  
88 Cheshire Street  
London  
E2 6EH

**OFFICE DETAILS**  
0207 739 6969  
info@peachproperties.com  
www.peachproperties.com